

# P7-D

DOMES  
PUSHBUTTONS

# SEALED DOME PUSHBUTTONS

MOMENTARY ACTION, ATTRACTIVE & RUGGED FOR WET & DUSTY ENVIRONMENTS

The P7-D pushbutton switch is a momentary switch with a contoured dome style pushbutton. Two design versions are offered; flush dome and raised dome button profile. The P7-D features a shorter behind panel depth, dusttight and moistureproof sealed construction excellent mechanical and electrical performance while operating under the most severe conditions. one million operations at 1 amp resistive, 50,000 at full rated load of 5 amps resistive or 3 amps inductive.

The P7-D is a double break switch with momentary circuit, the positive tactile feedback signals the operator when the switch is operated. Multiple contact variations are available as well as a variety of special order button legends. High contact pressure and unique contact design provide low contact resistance for low level switching capability as well as full rated service.

This quality precision snap-action switch is designed for use in instrument panels, grips, computers, heavy equipment and other applications where attractive rugged pushbutton switches are required.

## Features:

- Attractive dome style buttons
- Low level switching capability
- Less than 25mΩ contact resistance
- High contact pressure
- 6 circuit variations
- Positive tactile feedback
- Variety of mounting styles
- Constructed in accordance with MIL-PRF-8805/110 (no QPL)
- UL recognized & CSA certified
- Dusttight to IP64 & MIL-PRF-8805 Design 2 or watertight to IP68S

Raised Dome Button

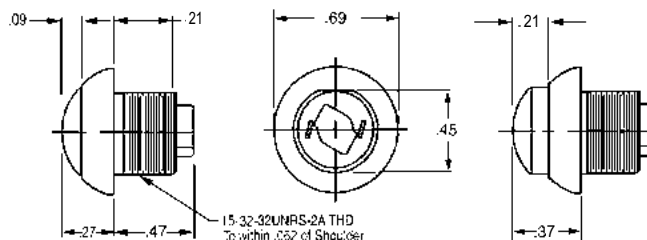


Flush Dome Button

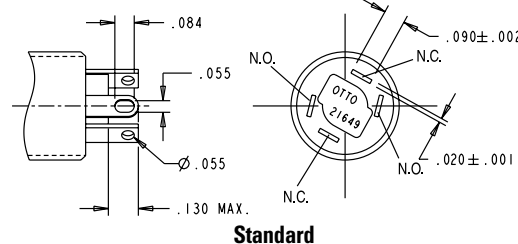


| Standard Characteristics/Ratings:                                |                                                           |             |
|------------------------------------------------------------------|-----------------------------------------------------------|-------------|
| <b>ELECTRICAL RATINGS:</b> Sea Level @ 28VDC or 115VAC, 60/400Hz |                                                           |             |
| Load                                                             | N.O./N.C.                                                 | Life Cycles |
| Resistive                                                        | 1A                                                        | 1,000,000   |
| Resistive                                                        | 5A                                                        | 50,000      |
| Inductive                                                        | 3A                                                        | 50,000      |
| DWV                                                              | 1050Vrms                                                  |             |
| Low Level                                                        | 10mA @ 30mV max                                           | 25,000      |
| <b>Electrical Life:</b>                                          | See Rating Chart                                          |             |
| <b>Mechanical Life:</b>                                          | 1,000,000 cycles                                          |             |
| <b>Seal:</b>                                                     | IP64 & MIL-PRF-8805 Design 2 or IP68S                     |             |
| <b>Operating Temp Range:</b>                                     | -55°C to +85°C                                            |             |
| <b>Operating Force:</b>                                          | 1.7 +/- 0.5 lb. (standard force)                          |             |
| <b>Total Travel:</b>                                             | 0.080 inches max                                          |             |
| <b>MATERIALS:</b>                                                |                                                           |             |
| <b>Case:</b>                                                     | Anodized aluminum alloy                                   |             |
| <b>Button:</b>                                                   | Thermoplastic                                             |             |
| <b>Contacts:</b>                                                 | Brass with gold over silver                               |             |
| <b>Terminal Hardware:</b>                                        | None provided                                             |             |
| <b>Mounting Hardware:</b>                                        | Hex nut, lockwasher and panel seal on watertight versions |             |

Terminal Style Short



Terminal Style "A" & "B"



Standard

NOTE: For PC mounting pattern, see P7 series.

## P7-D PART NUMBER CODE

| P7-D         | X                                    | X                  | X                 | X           | X            | X |
|--------------|--------------------------------------|--------------------|-------------------|-------------|--------------|---|
| Button Style | Terminal Style/ Construction Grade   | Circuit Form       | Contact Rating    | Bezel Color | Button Color |   |
| F. Flush     | A. Std. Commercial Solder            | 1. N.O.            | 1. Std.           | 1. Clear    | 1. Red       |   |
| R. Raised    | B. Std. Watertight Commercial Solder | 2. N.C.            | 2. Low Level Mil. | 2. Black    | 2. Black     |   |
|              | 1. Solder/Military/Short             | 3. N.C. 3 Terminal | 3. Low Level Com. |             | 3. Orange    |   |
|              | 2. Solder/Commercial/Short           | 4. N.O. 3 Terminal |                   |             | 4. Yellow    |   |
|              | 3. Solder/Mil. Watertight/Short      | 5. 5 Terminal      |                   |             | 5. Green     |   |
|              | 4. PC Pin/Commercial                 | 6. 2 Circuit       |                   |             | 6. Blue      |   |
|              | 5. PC Pin/Military                   |                    |                   |             | 7. Purple    |   |
|              | 6. PC Pin/Mil. Watertight            |                    |                   |             | 8. Gray      |   |
|              | 7. Solder/Com. Watertight/Short      |                    |                   |             | 9. White     |   |
|              | 8. PC Pin/Com. Watertight            |                    |                   |             |              |   |